

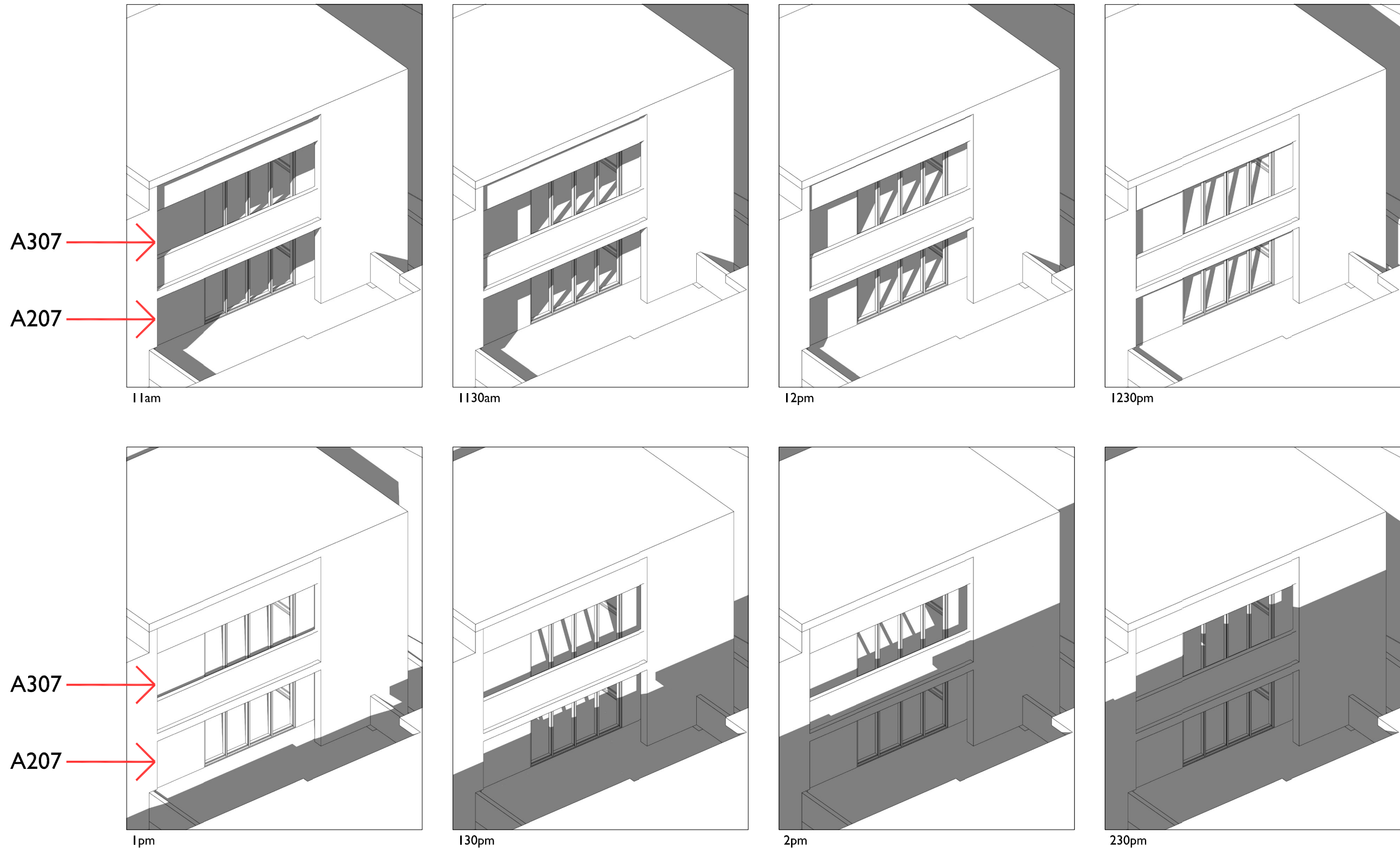
ANNEXURE 1

Architectural Drawing Set

**prepared by
ADM Architects**

**Akuna Street, Terralong Street
and Shoalhaven Street, Kiama**

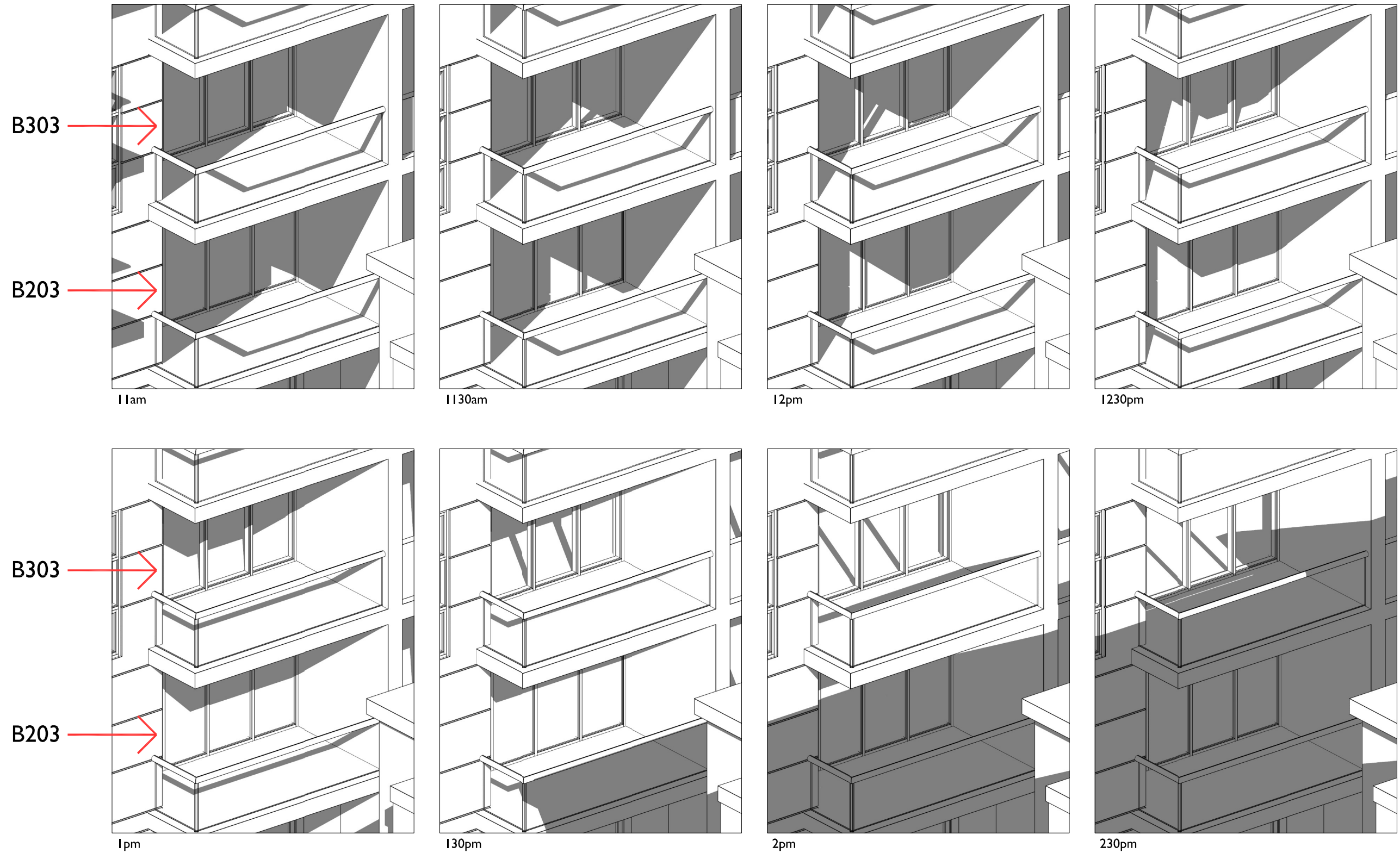
Part 6 - Drawings A-407 - A410



SOLAR ACCESS DIAGRAM - A307
WINTER SOLSTICE

							COPYRIGHT - These drawings remain the exclusive copyright of ADM Architects. Reproductions in any form whether electronic, digital or otherwise shall not be allowed except by express permission granted in writing by ADM Architects.		NICOLAS DAOUD & CO PTY. Ltd		Project DEMOLITION OF EXISTING STRUCTURES AND CONSTRUCTION OF A MIXED USE DEVELOPMENT COMPRISING RESIDENTIAL APARTMENTS ABOVE RETAIL SHOPS, COMMERCIAL TENANCIES AND ASSOCIATED CARPARKING AREAS		scale NTS	
							FIGURED DIMENSIONS - These drawings are not to be scaled. Figured dimensions shall be used in all cases.		adm ARCHITECTS		at LOT 1, DP50193, LOT 3, DPI I04857, PT.1, DP506764, LOTS 100 & 200, DPI017091, AKUNA & TERRALONG STREET KIAMA		date OCTOBER 2017	
A. 27.10.17			ISSUED FOR DEVELOPMENT APPLICATION	SP	ADM							drawing djm SJ chkd ADM		
ISSUE DATE DESCRIPTION				initials	chkd							drawing DEVELOPMENT APPLICATION		
sign			date										SOLAR ACCESS DIAGRAM - A307	
These drawings are not to be scaled. Figured dimensions shall be used in all cases.													Project No. Drawing No. issue	
													2016-19(a) A-407 A	

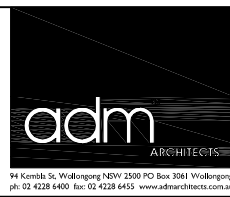
NOT FOR CONSTRUCTION



SOLAR ACCESS DIAGRAM - B203 & B303
WINTER SOLSTICE

A	27.10.17	ISSUED FOR DEVELOPMENT APPLICATION	SP	ADM
ISSUE	DATE	DESCRIPTION	initials	chkd
sign			date	
ⓘ These drawings are not to be scaled. Figured dimensions shall be used in all cases.				

COPYRIGHT - These drawings remain the exclusive copyright of ADM Architects. Reproductions in any form whether electronic, digital or otherwise shall not be allowed except by express permission granted in writing by ADM Architects.
FIGURED DIMENSIONS - These drawings are not to be scaled. Figured dimensions shall be used in all cases.
DISCREPANCIES IN DIMENSIONS/POSITIONS/LOCATIONS/FINISHES The Contractor is to verify any dimensional, location or finish discrepancy with ADM Architects prior to any physical construction or setting out so that ADM Architects is given the opportunity to resolve potential discrepancies or conflicts in sufficient time without causing abortive work. The Contractor shall be responsible for notifying ADM Architects of any such discrepancy or conflict that may arise on site.
COORDINATION OF WORKS - These drawings are to be read in conjunction with the full set of consultant's drawings, specifications, reports and DA conditions.
NOMINATED ARCHITECT - The nominated Architects for ADM Projects (Australia) Pty Ltd T/as ADM Architects is Angelo Di Martino ARB No.7608



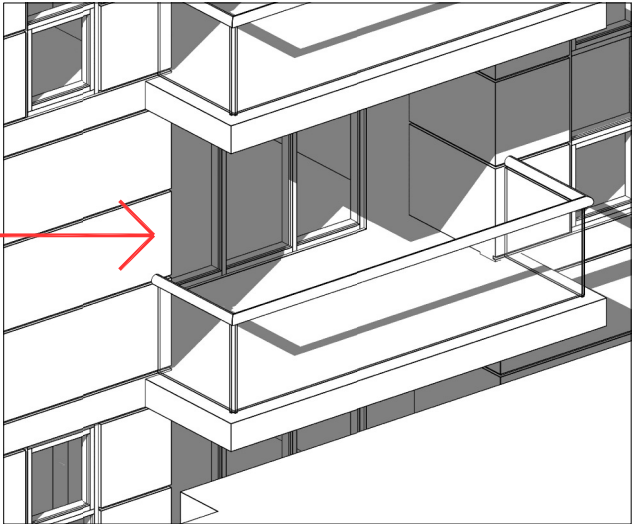
**NICOLAS
DAOUD &
CO PTY. Ltd**

Project
DEMOLITION OF EXISTING STRUCTURES AND CONSTRUCTION
OF A MIXED USE DEVELOPMENT COMPRISING RESIDENTIAL
APARTMENTS ABOVE RETAIL SHOPS, COMMERCIAL TENANCIES
AND ASSOCIATED CARPARKING AREAS
at
LOT 1, DP50193, LOT 3, DPI I04857, PT.1, DP506764, LOTS 100 & 200,
DPI017091,
AKUNA & TERRALONG STREET
KIAMA

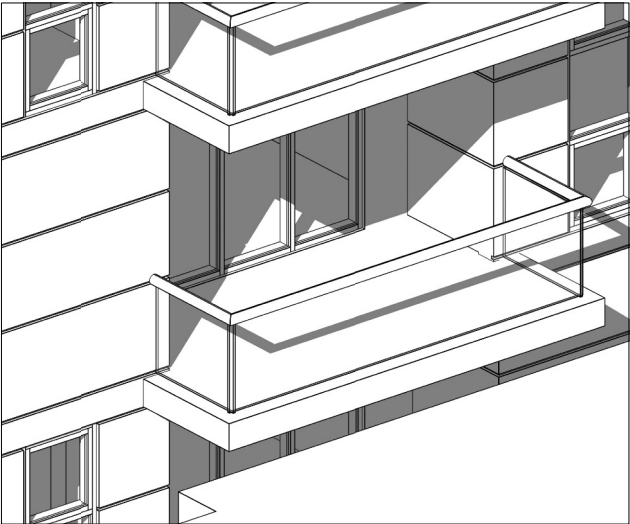
scale	NTS
date	OCTOBER 2017
drawn	djm SJ chkd ADM
drawing	DEVELOPMENT APPLICATION
Project No.	SOLAR ACCESS DIAGRAM - B203 & B303
2016-19(a)	Drawing No. A-408
	Issue A

NOT FOR CONSTRUCTION

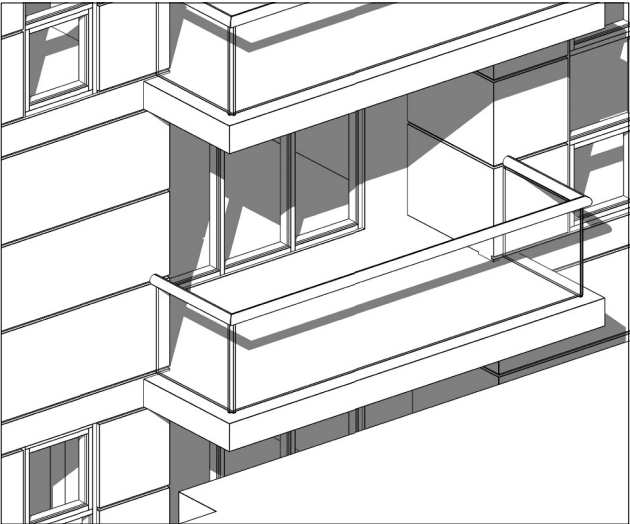
B204



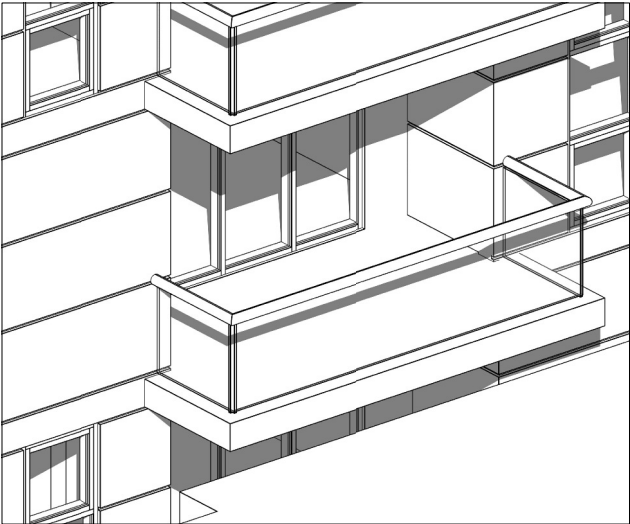
1130am



1200pm

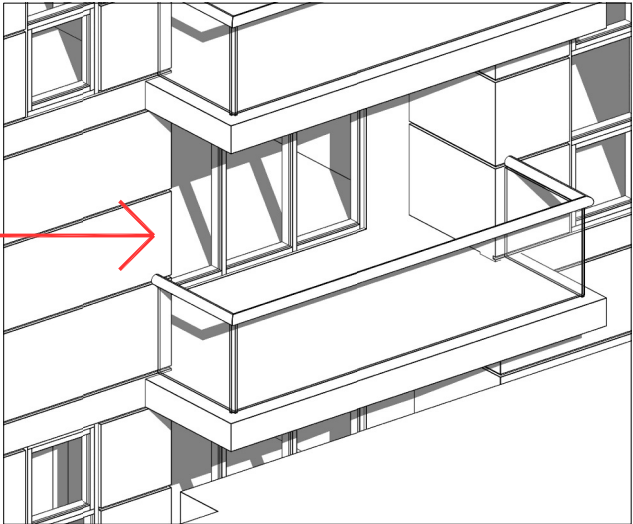


1230pm

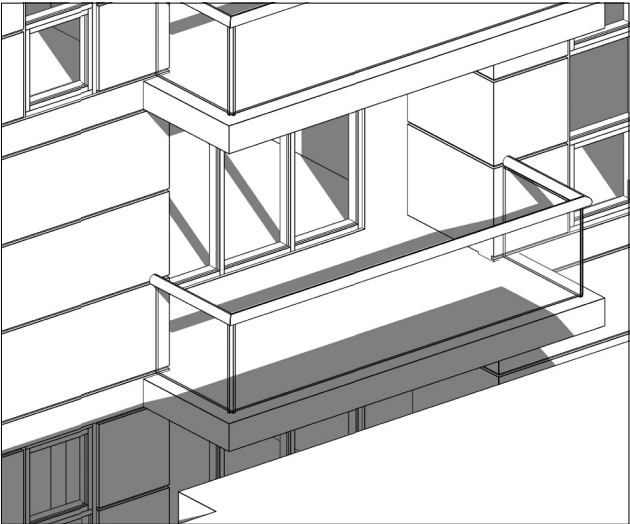


1pm

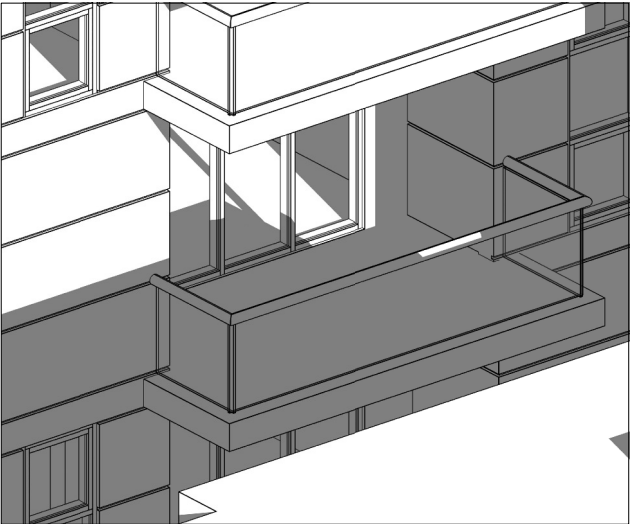
B204



130pm



2pm

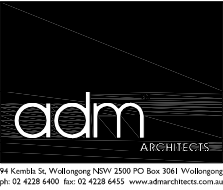


230pm

SOLAR ACCESS DIAGRAM - B204
WINTER SOLSTICE

A	27.10.17	ISSUED FOR DEVELOPMENT APPLICATION	SP	ADM
ISSUE	DATE	DESCRIPTION	initials	chkd
sign		date		
These drawings are not to be scaled. Figured dimensions shall be used in all cases.				

COPYRIGHT - These drawings remain the exclusive copyright of ADM Architects. Reproductions in any form whether electronic, digital or otherwise shall not be allowed except by express permission granted in writing by ADM Architects.
FIGURED DIMENSIONS - These drawings are not to be scaled. Figured dimensions shall be used in all cases.
DISCREPANCIES IN DIMENSIONS/POSITIONS/LOCATIONS/FINISHES The Contractor is to verify any dimensional, location or finish discrepancy with ADM Architects prior to any physical construction or setting out so that ADM Architects is given the opportunity to resolve potential discrepancies or conflicts in sufficient time without causing abortive work. The Contractor shall be responsible for notifying ADM Architects of any such discrepancy or conflict that may arise on site.
COORDINATION OF WORKS - These drawings are to be read in conjunction with the full set of consultant's drawings, specifications, reports and DA conditions.
NOMINATED ARCHITECT - The nominated Architect for ADM Projects (Australia) Pty Ltd T/A ADM Architects is Angelo Di Martino ARB No.7608



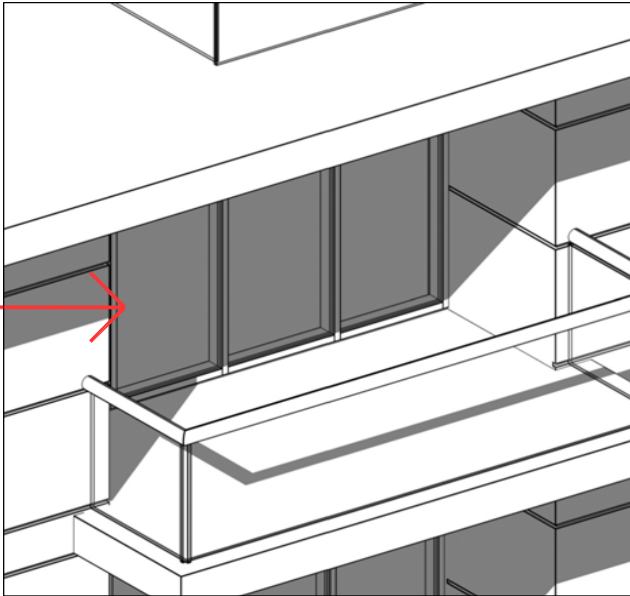
NICOLAS
DAOUD &
CO PTY. Ltd

Project
DEMOLITION OF EXISTING STRUCTURES AND CONSTRUCTION
OF A MIXED USE DEVELOPMENT COMPRISING RESIDENTIAL
APARTMENTS ABOVE RETAIL SHOPS, COMMERCIAL TENANCIES
AND ASSOCIATED CARPARKING AREAS
at
LOT 1, DP50193, LOT 3, DPI I04857, PT.1, DP506764, LOTS 100 & 200,
DPI017091,
AKUNA & TERRALONG STREET
KIAMA

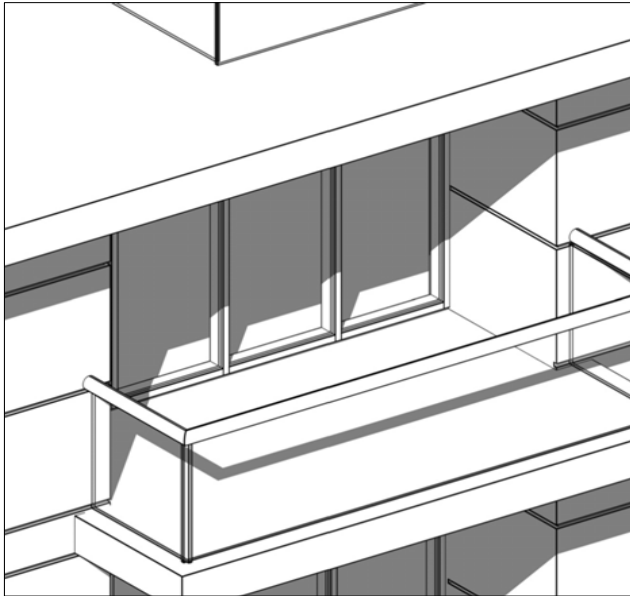
scale	NTS
date	OCTOBER 2017
drawn	djm SJ chkd ADM
drawing	DEVELOPMENT APPLICATION
Project No.	SOLAR ACCESS DIAGRAM - B204
2016-19(a)	Issue
A-409	A

NOT FOR CONSTRUCTION

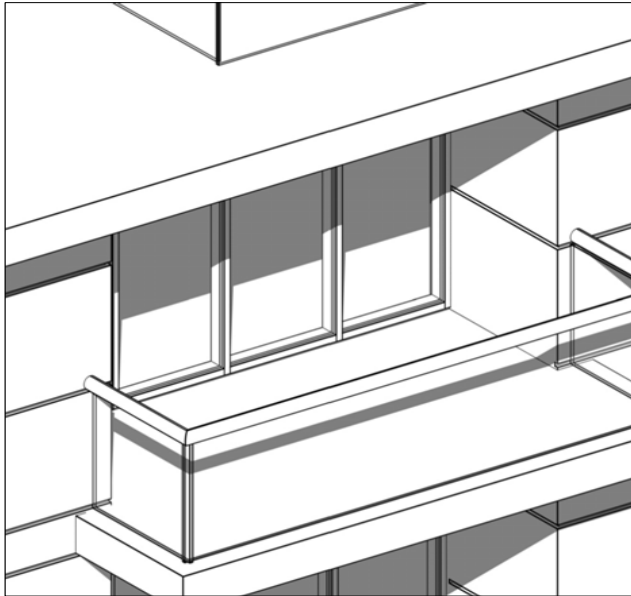
B305



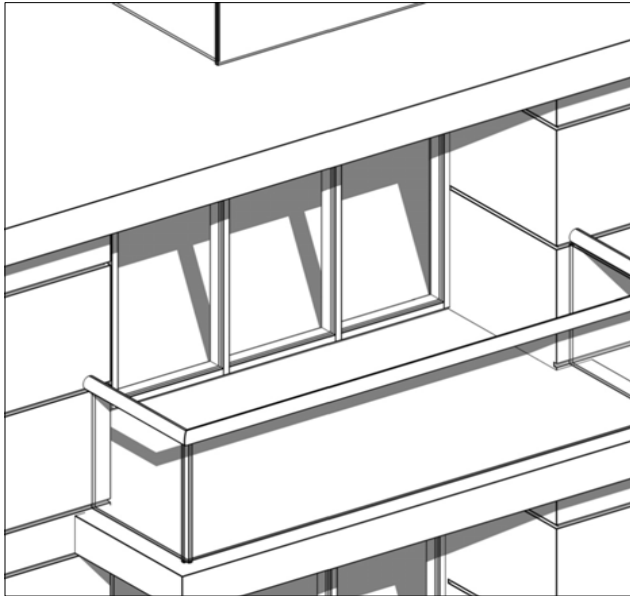
12pm



1230pm

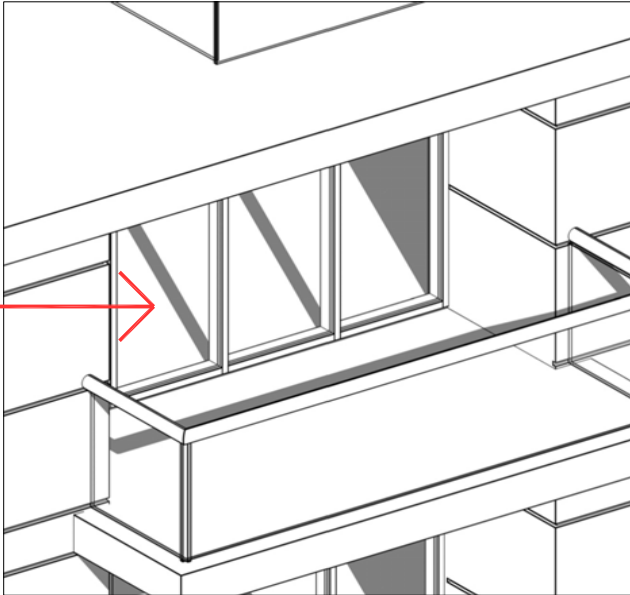


1pm

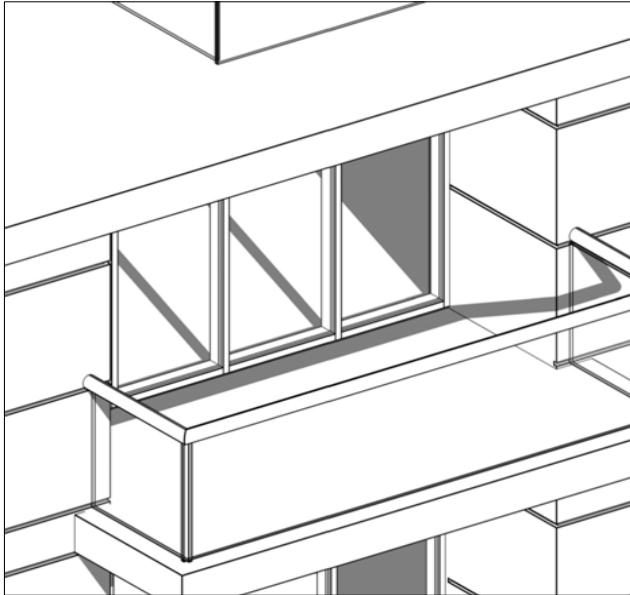


130pm

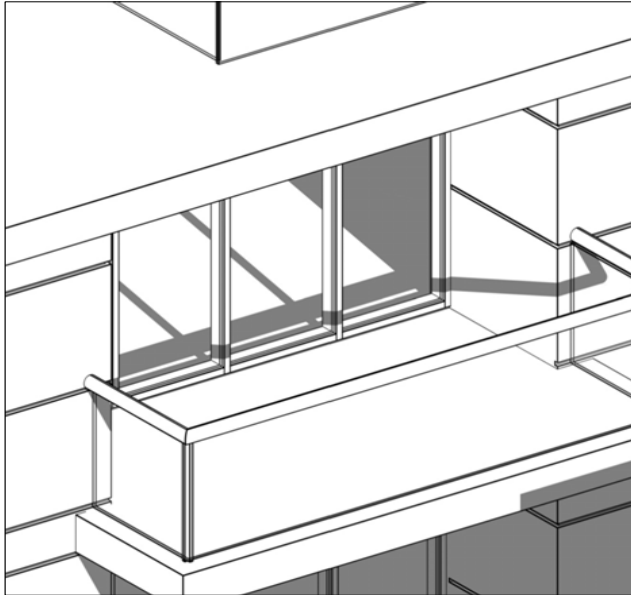
B305



2pm



230pm



3pm

SOLAR ACCESS DIAGRAM - B305
WINTER SOLSTICE

A	27.10.17	ISSUED FOR DEVELOPMENT APPLICATION	SP	ADM
ISSUE	DATE	DESCRIPTION	initials	chkd
sign			date	
These drawings are not to be scaled. Figured dimensions shall be used in all cases.				

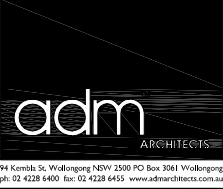
COPYRIGHT - These drawings remain the exclusive copyright of ADM Architects. Reproductions in any form whether electronic, digital or otherwise shall not be allowed except by express permission granted in writing by ADM Architects.

FIGURED DIMENSIONS - These drawings are not to be scaled. Figured dimensions shall be used in all cases.

DISCREPANCIES IN DIMENSIONS/POSITIONS/LOCATIONS/FINISHES The Contractor is to verify any dimensional, location or finish discrepancy with ADM Architects prior to any physical construction or setting out so that ADM Architects is given the opportunity to resolve potential discrepancies or conflicts in sufficient time without causing abortive work. The Contractor shall be responsible for notifying ADM Architects of any such discrepancy or conflict that may arise on site.

COORDINATION OF WORKS - These drawings are to be read in conjunction with the full set of consultant's drawings, specifications, reports and DA conditions.

NOMINATED ARCHITECT - The nominated Architects for ADM Projects (Australia) Pty Ltd T/A ADM Architects is Angelo Di Martino AIB No.7608



NICOLAS
DAOUD &
CO PTY. Ltd

Project
DEMOLITION OF EXISTING STRUCTURES AND CONSTRUCTION
OF A MIXED USE DEVELOPMENT COMPRISING RESIDENTIAL
APARTMENTS ABOVE RETAIL SHOPS, COMMERCIAL TENANCIES
AND ASSOCIATED CARPARKING AREAS
at
LOT 1, DP50193, LOT 3, DPI I04857, PT.1, DP506764, LOTS 100 & 200,
DPI017091,
AKUNA & TERRALONG STREET
KIAMA

scale	NTS		
date	OCTOBER 2017		
drawn	djm	SJ	chkd ADM
drawing	DEVELOPMENT APPLICATION		
	SOLAR ACCESS DIAGRAM - B305		
Project No.	2016-19(a)		Issue
Drawing No.	A-410		A

NOT FOR CONSTRUCTION